

# Starry

## Slit Lamp Imaging System

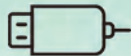


### Leading with USB 3.0 Imaging Excellence:



Unlock remarkable image quality with our advanced USB 3.0 camera, delivering exceptional results.

### Effortless Data Transfer:



Benefit from lightning-fast data transfer and simple connectivity. A single cable links to your computer with ease.

### Seamless Wireless Capture:



Powered by a 2.4GHz wireless solution, our camera ensures rapid response times and stable performance.

### Intelligent Exposure:

Our advanced solution guarantees precise and intelligent exposure for top-notch results.



### Efficiency in Design:



With an intuitive interface and compact build, our camera offers efficient operation and easy installation.

### Comprehensive Information Management:



Empower your practice with integrated software featuring a database for streamlined patient data management.

### Enhanced Compatibility:

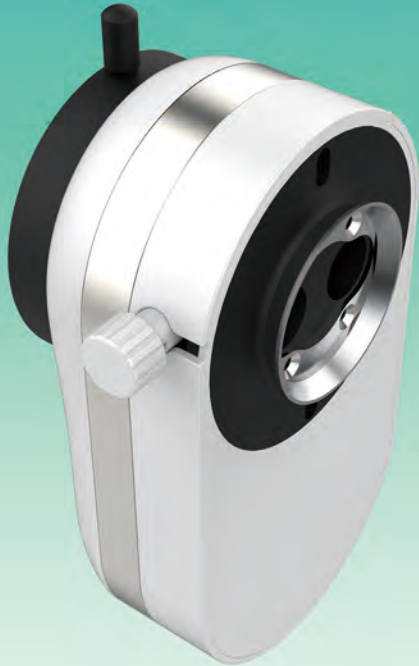


Seamlessly integrating with various slit lamp models, our camera offers versatility and convenience.



# Starry

## Slit Lamp Imaging System



- **Image Sensor:** 1/1.8" progressive high-speed CMOS
- **Image Size:** Up to 6 meg (3088x2064) pixels
- **Cell Size:** 2.4 $\mu$ m x 2.4 $\mu$ m
- **Resolution Dept.:** 8bit RGB Bayer Pattern
- **Transmit Method:** USB 3.0
- **Transmit Speed:** Up to 5Gbps
- **Frame Rate:** Up to 30Fps
- **Photograph:** External Trigger or Software Trigger (Wireless: 2.4Ghz)
- **Dimension:** L155mm x W85mm x H46mm
- **Power Consumption:** Less than 3W



Ray Vision



Ray Vision International Corp.  
Tel.: 86-10-87162046  
Email: sales@ray-vision.com  
www.ray-vision.com