

SL-F5

Slit Lamp



Microscope Type: Galilean Dystem

Magnification Changer: Revolving Drum

Eyepiece Magnification: 12.5X

Slit Width: 0mm~14mm Continuously Adjustable

Slit Length: 1mm~14mm Continuously Adjustable

Slit Angle: 0~180°Continuously Adjustable

Filter: Heat Absorption, Grey, Redfree (Green), Cobalt Blue

Light Source: Warm LED

Magnification: 6.3X,10X,16X,25X,40X

Diopter ±7D

Pupil Range 52mm-85mm

Visual Field Diameter: 6X:33mm; 10X:22mm;

16X:14mm; 25X:8.5mm; 40X:5.5mm

Illumination Type: Haag-Streit Type

Illumination Tilting: 5°,10°,15°,20°

Slit Aperture Size: φ0.2, φ1, φ3, φ5, φ10, φ14 (mm)



SL-F5

Slit Lamp



Starry

Slit Lamp Imaging System



Leading with USB 3.0 Imaging Excellence:



Unlock remarkable image quality with our advanced USB 3.0 camera, delivering exceptional results.

Effortless Data Transfer:



Benefit from lightning-fast data transfer and simple connectivity. A single cable links to your computer with ease.



Seamless Wireless Capture:

Powered by a 2.4GHz wireless solution, our camera ensures rapid response times and stable performance.



Intelligent Exposure: Our advanced solution guarantees precise and intelligent exposure for top-notch results.

Efficiency in Design:



With an intuitive interface and compact build, our camera offers efficient operation and easy installation.

Comprehensive Information Management:



Empower your practice with integrated software featuring a database for streamlined patient data management.

Enhanced Compatibility:

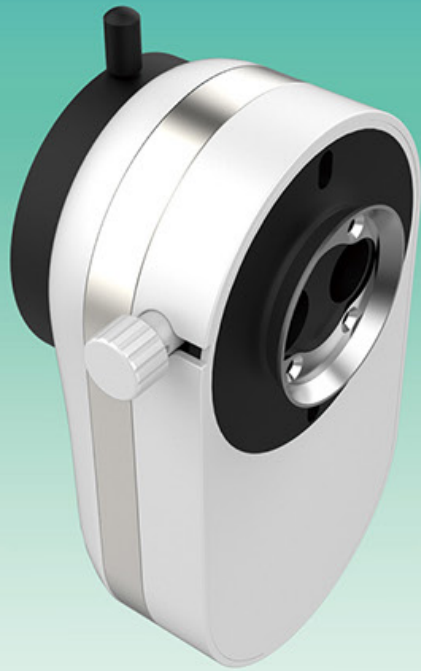


Seamlessly integrating with various slit lamp models, our camera offers versatility and convenience.



Starry

Slit Lamp Imaging System



- **Image Sensor:** 1/1.8" progressive high-speed CMOS
- **Image Size:** Up to 6 meg (3088x2064) pixels
- **Cell Size:** 2.4 μ m x 2.4 μ m
- **Resolution Dept.:** 8bit RGB Bayer Pattern
- **Transmit Method:** USB 3.0
- **Transmit Speed:** Up to 5Gbps
- **Frame Rate:** Up to 30Fps
- **Photograph:** External Trigger or Software Trigger
(Wireless: 2.4Ghz)
- **Dimension:** L155mm x W85mm x H46mm
- **Power Consumption:** Less than 3W



Ray Vision



from  **Grafton Optical**

graftonoptical.com
sales@graftonoptical.com
01923 233980

