

FundusVue™

from  **Grafton Optical**

Digital Non-Mydriatic Retinal Camera

Making retinal image fast and easy

Eyesight reduction and even blindness can often be prevented when eye diseases are detected early.

FundusVue is a fast and easy to use non-mydriatic retinal imaging system based on Crystalvue optical technology.

FundusVue is designed to provide images of the eye as an aid to clinicians in the diagnosis of diabetic retinopathy, AMD, glaucoma and other retinal diseases.

FundusVue is committed to provide affordable price for early evaluation of retinal problems.

Compact and user-friendly

■ Fast to Making Image

A dedicated software speeds up image capture with live preview imaging. The entire process from welcoming the patient to delivering high quality images takes only a few minutes



■ Easy to Use

Multiple controls and settings are not necessary. Internal fixation lights and self-guiding software will help you to capture the image. Just align the pupil, optimize the focus in the live preview on your screen and simply freeze the image you see. Exposure and LED flash are automated controlled for most patients.



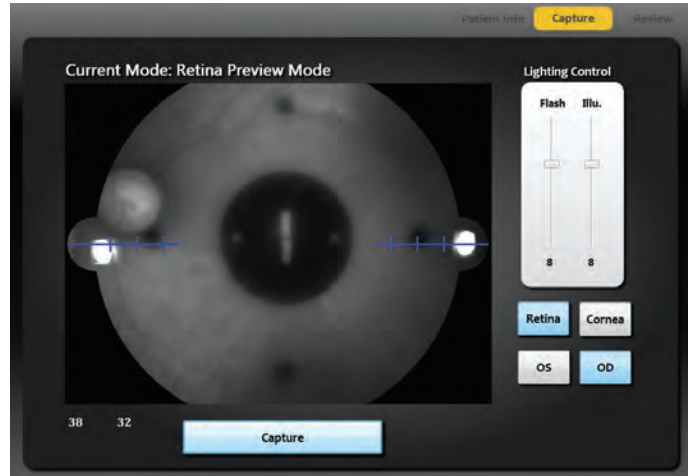
■ Portable

Weighting only 2Kg, the compact design saves setup space and can be easily transported when needed. The simple USB connection gives you flexibility where you can run the examination. Also, this makes it very easy for you to review the images together with your patients.



Retinal Imaging Software

A bundled software allows you to store, retrieve, archive, process and share the digital images instantly with just a mouse click. Images may also be exported to the storage server and output to a printer. Features include: color, digital red-free, RGB and cup-to-disc.

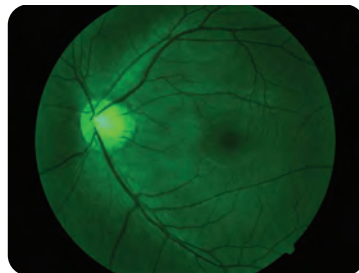


User interface

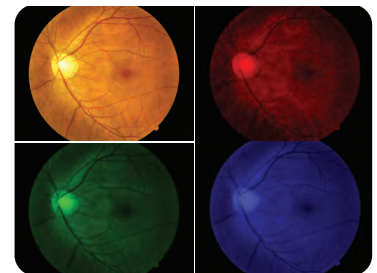
Easy to detect pathology



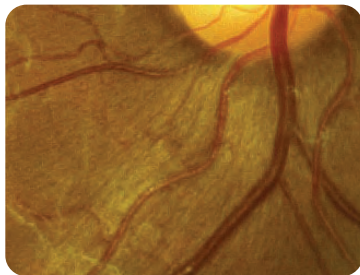
Color



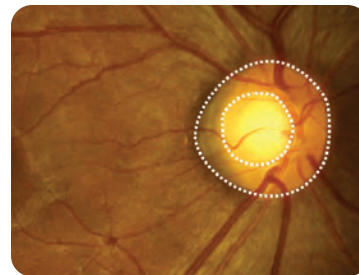
Digital red free



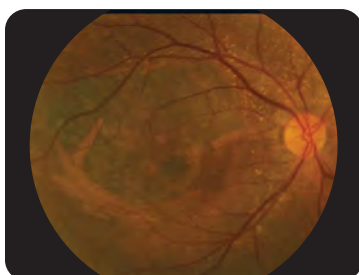
RGB



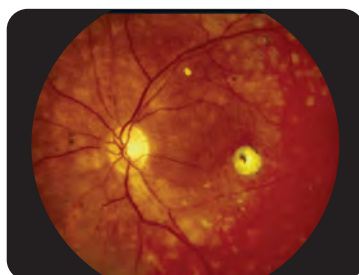
Zoom to see tiny details



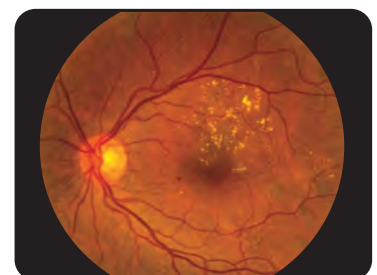
Cup-to-disc



Early stage AMD



Maculopathy and glaucoma suspect disc



Diabetic retinopathy

Accurate and work efficiently

[FundusVue Specifications](#)

Type	Digital non-mydratic retina camera
Type of photography	Color, digital red-free, anterior eye image
Image format	PNG, JPEG, BMP
Field of view	45 degrees
Minimal pupil size	4 mm
Working distance	25 mm
Focus adjustment range	-15D to +10D (without compensation lens) -35D to +30D (with compensation lens)
Flash intensity	12 levels, can be set manually
Light source	Observation light source: Infrared LED Flash light source: White LED
Auto exposure	YES
Camera	12bits CCD camera module
Eye fixation	Internal six points targets
Mount movement	100 mm (longitudinal), 90 mm (lateral)
Chin rest movement	70 mm
Networking capability	YES
PC connection	USB2.0
Power supply	AC100V to 240V, 50/60Hz, auto selected
Operating Environment	Temperature: 10°C to 35°C Humidity: 30% to 90% (no condensation)
Dimensions (WxDxH)	110 mm x 210 mm x 335 mm (excluding chinrest)
Weight	2 Kg (excluding chinrest)

Crystalvue

from  **Grafton Optical**

Unit 7 River Park Industrial Estate,
Billet Lane, Berkhamsted,
Hertfordshire, HP4 1HL

01923 233980
sales@graftonoptical.com