

Grafton Optical

Ophthalmology Instruments



4Sight Ultrasound System

- UBM
- B-Scan
- A-Scan Biometry
- Pachymetry



A-Scan Biometry



UBM



SL500D - Slit Lamp



SHIN-NIPPON

by **Rexxam**

ACCUREF K-900
Auto Refractor Keratometer



XL1 LED Hand Held
Slit Lamp



NEW DL-1000
Auto Lensmeter



EASYSCAN

Smart Retinal Imaging

SLO Technology

- ✓ An alternative to OCT
- ✓ Captures through small pupils
- ✓ Works in bright light
- ✓ Auto focus & capture
- ✓ Greater detail for early detection



EasyScan, OS, merged central



EasyScan, OS, infrared central



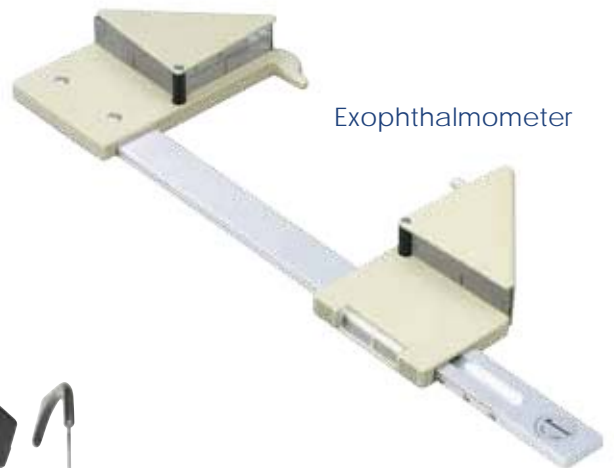
EasyScan, OS, green central



Projection Perimeter



M-Charts



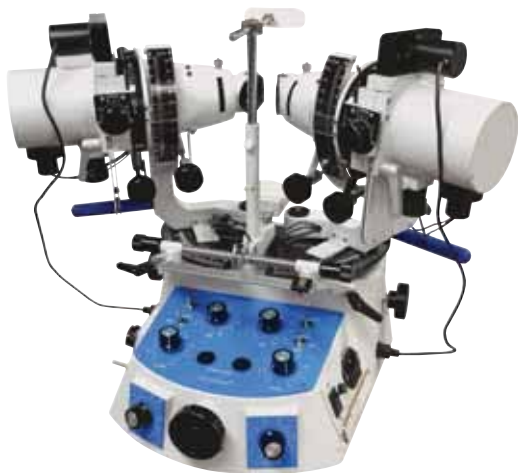
Exophthalmometer



Trial Frames



Applanation Tonometers



Synoptoscope



Slit Lamps



4OPTIK



CH2500
Patient Procedure Chair



CH2000
Examination Chair



CH2500
Combi Unit



2 Position
2 Up table



NEW Space saving
Wall mount Unit

Attaches to the wall
Perfect for most instruments



66R Newline Unit





G3 Ocular Response Analyzer
with Corneal Hysteresis



ClearChart3 with Polaroid



7CR Auto Tonometer



PT100 Portable Non-Contact
Tonometer

VISIONIX

The Vision of the Future

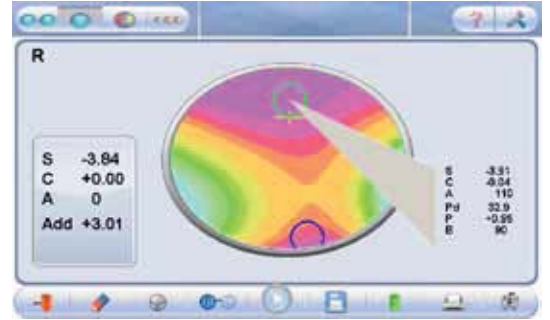
VX40

Fully Automatic
Lensmeter



See video on :

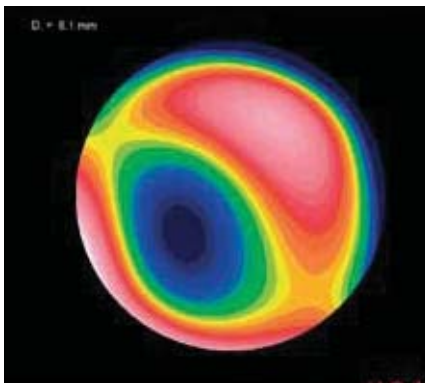
<http://www.visionix-wavelenspro.com/>



VX130

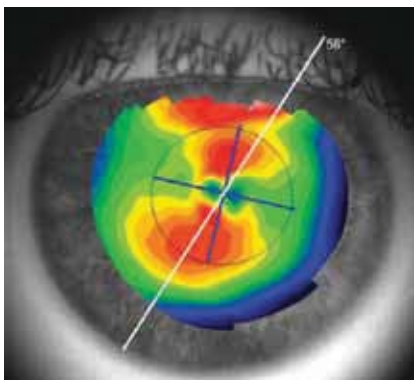
Complete anterior chamber analysis

Corneal Power



*Corneal power, pachymetry,
aberrometry, and post op axis check*

Post-op axis toric lens implant



Product's video:

<http://www.visionix-vx120.com>





The
DGH 6000
SCANMATE
A Portable USB A-Scan
by DGH Technology

*Upgrade Your Practice's
Diagnostic Capabilities
with the World's Most
Advanced A-Scan*



- Contact and Water Immersion
- IOL / Post-Refractive Calculator
- Centralized Storage of Records
- Integrates with DGH 8000 B-Scan
- EMR / EHR Compatible



The New
PACHMATE 2
from DGH Technology

*Globally
Recognized
as the
Leading Handheld
Pachymeter*



Now Featuring
Exclusive
Automatic Report
Generation Using
Wireless Bluetooth®
Technology



The DGH8000

SCANMATE

A Portable USB B-Scan
by DGH Technology

*Enhance Your Practice's
Diagnostic Capabilities*

- Position Map Tool for Annotating Probe Orientation
- A-Mode Overlay & Caliper Measurement Tools
- Customizable, Professional Reports
- Integrates Seamlessly with the DGH 6000 A-Scan
- EMR / EHR Compatible

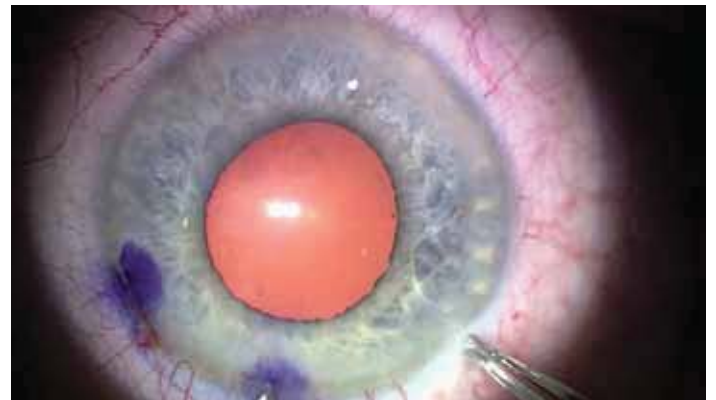




OPTRONICS®

HD Camera 1080p

Create stunning presentations!



EasyTon Disposable Prisms

Box of 100

Quantity discounts available

Price on application



T: 01923 233980
F: 01923 246570
E: sales@graftonoptical.com
graftonoptical.com

 **Grafton Optical**

Grafton Optical Company Limited
Crown Hall, The Crescent
Watford, Hertfordshire
WD18 0QW